



Velos eOncology

A comprehensive workflow and data management information system serving the diverse needs of multiple specialties involved in the management of cancer research.

Velos eResearch Product Line

Velos eResearch

- Account Management
- Study Setup
- Data Management
- Patient Management
- Reports & Ad-Hoc Queries

Velos eClinical

Velos eFinancials

Velos ePortal

Velos eIRB

Velos eSample

Velos eCardio

Velos eOncology

Velos eTools

Technology-based Services

Velos Grid Services

Velos Interface Engine

Contact Information

Velos, Inc.
2201 Walnut Ave.,
Suite 208
Fremont, CA 94538

T: (510) 739 4010

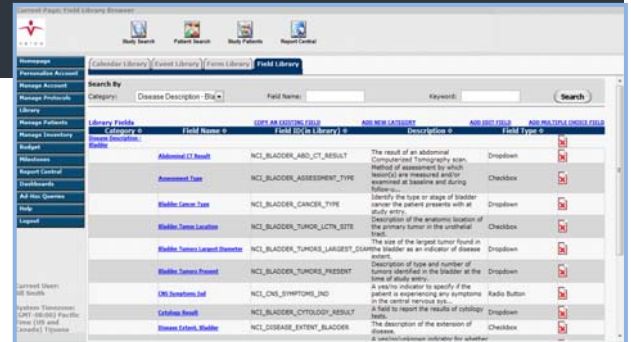
F: (510) 739 4018

Email: info@velos.com

Website: www.velos.com

Velos eOncology suite is the first complete, in-production solution for the management and execution of clinical trials created specially for oncology research programs. The Velos eOncology suite is comprised of subsystems, reporting tools, data dictionaries, system content, and third party system interfaces that have been adapted specifically to meet the needs of oncology researchers, including NCI reporting and oncology research management. In addition, the product delivers full patient management capabilities, including data capture, query management, and reporting and analysis, for clinical trial managers and clinicians. Highlights of the Velos eOncology suite include the following:

- A full set of data dictionaries (e.g. Common Toxicity Criteria), custom database configurations and cancer-specific profiling, including NCI Common Data Elements for use in designing Case Report Forms.
- Support of oncology research networks and interoperability needs.
- A comprehensive set of oncology research reporting, analysis and data submission capabilities that serve the needs of the oncology community in communicating with the NCI systems.



Patient and Database Management

Oncology is a diverse research area with multiple specialties involved in the management of cancer. The Velos data model supports NCI/caBIG/Enterprise Vocabulary Services and the NCI/NCICB. The data model is also compliant with the NCI's DSR, CDEs, and CRFs. Customers can create their own data model extensions without Velos support and can also create and maintain any number of their proprietary data models in Velos.

The application allows you to decide what fields and data are captured — simple patient demographics; or a base clinical profile for all patients; or a detailed profile for specific malignancies or treatments. Velos provides cancer researchers with relevant dictionaries, such as ICD codes, TNM and histopathology classifications, and NCI data elements, among others. With appropriate security and load precautions, data managers and statisticians can access data, load data to statistical or analytical programs, or create custom reports for analyses.



NCI Cancer Center Management Support

Working with centers that are NCI-certified as Comprehensive Cancer Centers (CCCs), or are in the process of seeking such certification, the Velos eOncology suite automates tracking and management of clinical studies to deliver the NCI Summary Reports. The NCI Summary Reports demand extensive data collection, input, and analysis. With Velos, this reporting becomes part of the workflow in the center, and the most intricate reports, such as the NCI Summary Reports 3 and 4, are just one click away.

Delivering Information to/from the NCI

There is an increasing awareness that 'speaking the same language' across one or many trials in a disease area greatly enhances the value of the information for the community. The NCI has defined several sets of information, and Velos provides these as part of the service to the oncology community.

Velos - CDEs/ caDSR Import Function

There is an increasing need for institutions to use standardized metadata to increase efficiency and accuracy in capturing and analyzing information. The NCI has created the caDSR to serve as a tool for institutions to use for this purpose. The caDSR-to-Velos direct feed further enhances the accuracy of elements and helps to close the discrepancy gap that so often exists across institutions. This facilitates research collaboration through a common semantic platform. Fields are brought over from caDSR into Velos eResearch along with all their properties, help content, scoring values, public ID, etc. From the Field Library in Velos, the caDSR categories and fields can be viewed, browsed or searched by specific field name, public ID or other attributes.

Common Toxicity Criteria

The NCI makes available the CTC (Common Toxicity Criteria) dictionaries, which Velos provides as automated, searchable lookups within the application.

CDUS Submissions

Velos provides the extraction routines that allow investigators or managers to update the NCI's CDUS database where required with data from their studies. These updates follow specific rules and the CDUS teams automatically 'approve' the updates after running software routines that check submission for completeness, consistency, and integrity.

Contact Information

Velos, Inc.
2201 Walnut Ave.,
Suite 208
Fremont, CA 94538
T: (510) 739 4010
F: (510) 739 4018
Email: info@velos.com
Website: www.velos.com